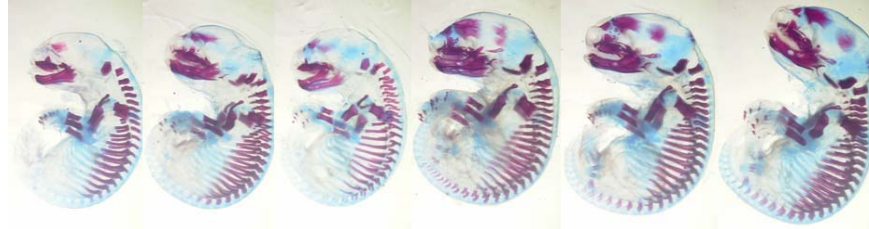


**HS 2016 - BIO 269** Research Practical in Palaeontology  
**‘Evolutionary Morphology and Palaeobiology of Vertebrates’**  
(Laboratory Prof. Marcelo Sánchez)

Location: Palaeontological Institute and Museum.

Dates: Preferably second Blockkurs Quarter (13.10.- 04.11.2016); otherwise any Quarter, minimal length: 4 weeks



This research practical serves as a practical introduction into research in organismic evolution of vertebrates. The student works on a specific project of her/his choice. In addition, several activities involving visits to museums and collections in Switzerland and abroad and tours of research laboratories will be conducted. Activities include also participation in lab meetings, and discussions with postdocs and doctoral students in the group about ongoing projects, as well as practical exercises involving different kinds of materials (fossils, embryos, 3D digital reconstructions). Participants will be expected to make presentations and write reports in English.

If you have any question, please contact Marcelo Sánchez, at: [m.sanchez@pim.uzh.ch](mailto:m.sanchez@pim.uzh.ch)

